



# APOBEC3D/F Polyclonal Antibody

<b>Catalog No</b>	YP-Ab-01535
<b>Isotype</b>	IgG
<b>Reactivity</b>	Human;Monkey
<b>Applications</b>	WB;IHC;IF;ELISA
<b>Gene Name</b>	APOBEC3D/APOBEC3F
<b>Protein Name</b>	Probable DNA dC->dU-editing enzyme APOBEC-3D/F
<b>Immunogen</b>	The antiserum was produced against synthesized peptide derived from human APOBEC3D/F. AA range:232-281
<b>Specificity</b>	APOBEC3D/F Polyclonal Antibody detects endogenous levels of APOBEC3D/F protein.
<b>Formulation</b>	Liquid in PBS containing 50% glycerol, 0.5% BSA and 0.02% sodium azide.
<b>Source</b>	Polyclonal, Rabbit,IgG
<b>Purification</b>	The antibody was affinity-purified from rabbit antiserum by affinity-chromatography using epitope-specific immunogen.
<b>Dilution</b>	WB: 1/500 - 1/2000. IHC: 1/100 - 1/300. ELISA: 1/40000.. IF 1:50-200
<b>Concentration</b>	1 mg/ml
<b>Purity</b>	≥90%
<b>Storage Stability</b>	-20°C/1 year
<b>Synonyms</b>	APOBEC3D; Probable DNA dC->dU-editing enzyme APOBEC-3D; APOBEC3F; DNA dC->dU-editing enzyme APOBEC-3F; Apolipoprotein B mRNA-editing enzyme catalytic polypeptide-like 3F
<b>Observed Band</b>	40kD
<b>Cell Pathway</b>	Cytoplasm. Cytoplasm, P-body.
<b>Tissue Specificity</b>	Expressed in lymphoid organs. Also detected in non-lymphoid tissues including lung.
<b>Function</b>	cofactor:Zinc.,function:Unknown. Unable to reduce HIV-1 infectivity in vitro.,miscellaneous:It is one of seven related genes or pseudogenes found in a cluster, thought to result from gene duplication, on chromosome 22.,similarity:Belongs to the cytidine and deoxycytidylate deaminase family.,
<b>Background</b>	This gene is a member of the cytidine deaminase gene family. It is one of a group of related genes found in a cluster, thought to result from gene duplication, on chromosome 22. Members of the cluster encode proteins that are structurally and functionally related to the C to U RNA-editing cytidine deaminase APOBEC1 and inhibit retroviruses, such as HIV, by deaminating cytosine residues in nascent retroviral cDNA. [provided by RefSeq, Jul 2008],



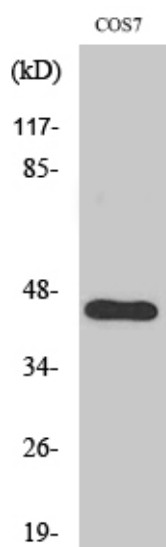
### matters needing attention

Avoid repeated freezing and thawing!

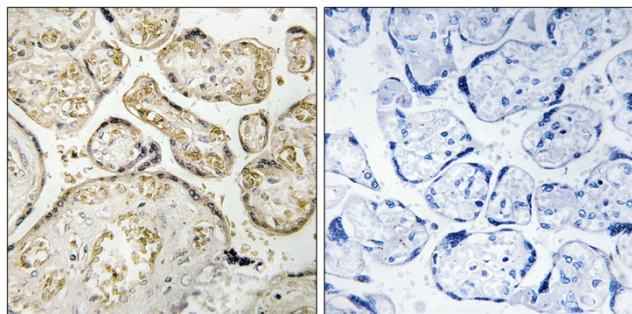
### Usage suggestions

This product can be used in immunological reaction related experiments. For more information, please consult technical personnel.

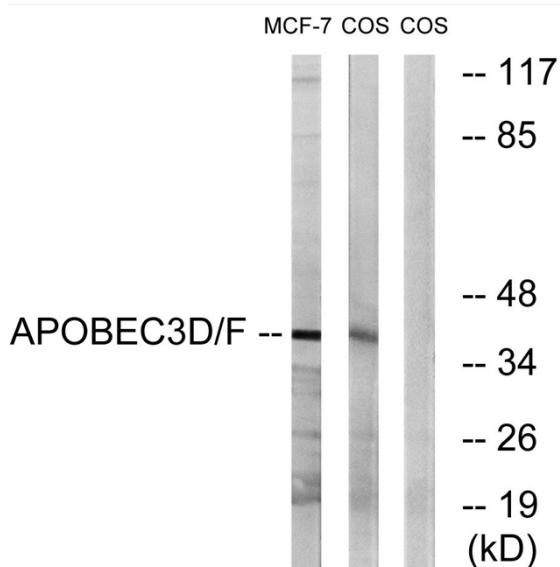
## Products Images



Western Blot analysis of various cells using APOBEC3D/F Polyclonal Antibody



Immunohistochemistry analysis of paraffin-embedded human placenta tissue, using APOBEC3D/F Antibody. The picture on the right is blocked with the synthesized peptide.



Western blot analysis of lysates from COS7 and MCF-7 cells, using APOBEC3D/F Antibody. The lane on the right is blocked with the synthesized peptide.